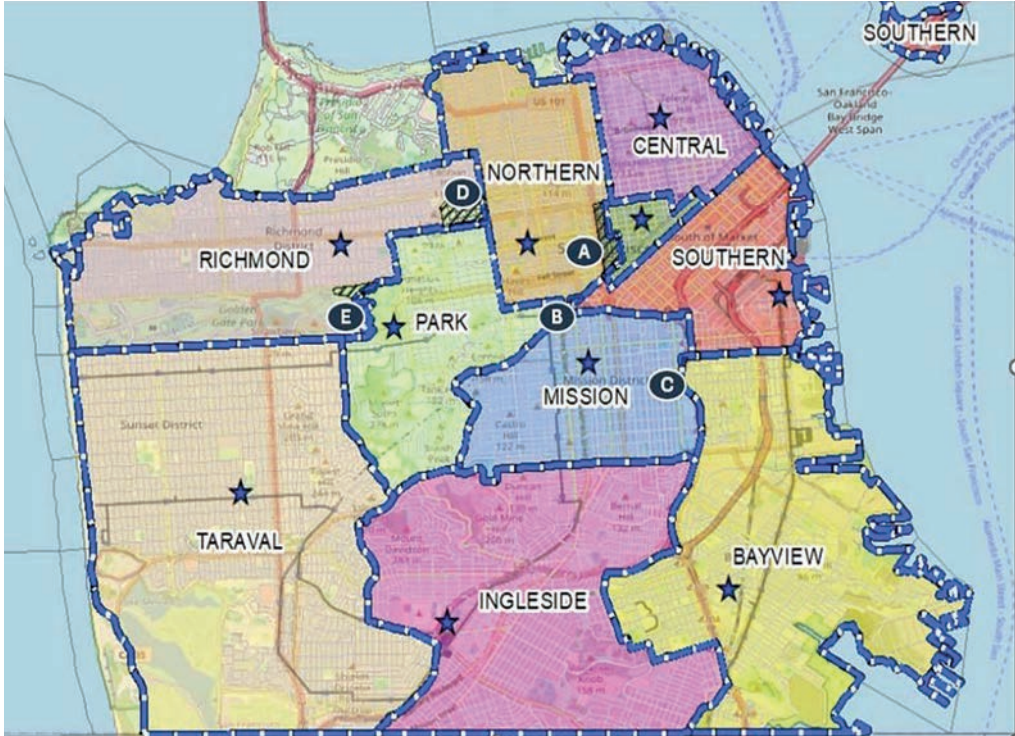




SF Police Department's Revised District Station Boundaries Receive Mixed Reviews



SFPD submitted a revised police district boundary map to the San Francisco Police Commission last month.

BY JESSICA ZIMMER

Southside residents are concerned that law enforcement will be less robust in their neighborhoods if newly proposed police district station boundaries are adopted. Under SFPD's 2024 district boundary report, submitted to the San Francisco Police Commission last month, five significant changes would be made to eight police districts, including moving an area bounded by Utah and Mariposa streets from the Bayview to the Mission district.

SFPD claimed the adjustments would better balance enforcement

workloads among stations and increase efficiency. The proposed map maintains Mission Bay in the Southern District, centered at the Southern Station at 1251 Third Street. Potrero Hill and Dogpatch would remain in the Bayview District, with the Bayview Station at 201 Williams Avenue.

"The detail in the report paints a sobering picture of challenges for the SFPD as it faces San Francisco's budget shortfall," said Margaret Keane, a South-of-Market resident. "The report reflected a shortfall of 475 officers in the patrol area, with deficits by district ranging from 20 percent to 42 percent,

A From Northern to Tenderloin
Western boundary moved to Van Ness Avenue

B From Park to Northern
Southern boundary shifts to Market Street

C From Bayview to Mission
The area bounded by Utah and Mariposa streets

D From Richmond to Park
Northern boundary changed to Pine, both sides of Divisadero Street and Western to Masonic Avenue

E From Richmond to Park
Park boundary extended to Eighth Avenue and JFK Drive

measured as a percentage of existing staff. Every district had a shortfall. The [2023] SFPD Staffing Analysis Report recommended 122 officers on foot beat, with only 45 foot beat officers in place as of January 2024. Filling these spots takes more than budget as the Department faces upcoming retirements and recruiting challenges abound."

Potrero Hill residents are concerned that the plan adds territory to Bayview District, leaving merchants in Dogpatch, Potrero Hill, and along Third Street with less security. They're worried

SFPD continues on page 10

Burglars Use Mail Key to Access Multiple Dogpatch Buildings

BY REBEKAH MOAN

A Dogpatch condominium building was burglarized twice, along with a third attempt, in the span of four days earlier this year. Instead of smashing windows or picking locks, the criminals gained entry with a stolen U.S. Postal Service key.

According to Dirk Duffner, 700 Illinois Street Homeowners Association president, security cameras recorded a man and two women wearing expensive shoes approaching the building's front door on January 2. They used a USPS key to get in, then opened the mailboxes. The trio grabbed all mail and packages, entered the parking garage, and, unbeknownst to the residents, stole a garage door opener, and left.

In response to a call from residents



Several attempts were made to burglarize 700 Illinois Street in early January. Photographs captured from security camera footage. PHOTO: Courtesy of Dirk Duffner

about the incident, the San Francisco Police Department told them to take their complaints to USPS.

"We then called the postal service and got the runaround," Duffner said.



When a USPS inspector telephoned back, he said he was unaware of the incident and asked for details. However,

BURGLARIES continues on page 4

Green Benefit District to Wilt Unless Property Owners Opt to Renew

BY CHAITANYA TONDEPU

The Dogpatch and Northwest (NW) Potrero Hill Green Benefit District (GBD) was founded in 2015 by residents who wanted more communal spaces in an area previously dominated by industrial uses. Three-quarters of district property owners endorsed the concept, which was approved by the San Francisco Board of Supervisors.

Community and Business Improvement districts are developed to improve neighborhood prosperity, safety, maintenance, and quality-of-life. First established in Ontario, Canada in 1969, the districts were adopted in California in 1989. In 2004 the City and County of San Francisco enacted an ordinance to extend district terms from five to up to 15 years, while lowering the threshold of property owners representing total assessed property value within the district to request formation from 50 to 30 percent. If at least half of district property owners endorse the nonprofit San Francisco Board of Supervisors takes a final vote on approval.

The GBD is one of 19 benefit districts in San Francisco and the only "green" one. Its primary focus is to transform neglected areas into verdant spaces, enhancing biodiversity, maintaining green infrastructure, and fostering community interaction. In contrast, CBDs prioritize urban cleanliness, safety, and, where possible, boosting the local economy.

Under the GBD residential properties are assessed \$0.0951 per square foot (sq ft), typically less than \$250 a year. Industrial lands are charged \$0.0476 per sq ft; designated greenspaces pay \$0.0237 per sq ft. In 2022/2023 the GBD collected \$599,550 from assessments and roughly \$230,000 in grants and donations.

"Assessment dollars make up about two-thirds to three-fourths of what is brought in, and the remainder are... from community challenger grants, other nonprofits like GreenTrust SF and Avenue Greenlight, and from UCSF and developers in the neighborhood who want to support the work that we do," mentioned Donovan Lacy, GBD board president. "We're constantly keeping our eyes out to continue raising funds."

GBD continues on page 10

PUBLISHER’S VIEW

Too Much Wisdom

BY STEVEN J. MOSS

Steven Moss will turn 65-years-old this fall, an upcoming passage that prompted him to share the “wisdom” he’s acquired over the past six decades and a half.

Despite Hollywood’s constant propaganda it’s common knowledge: almost nobody meets, falls in love and then “lives happily ever after.” Nobody. Meeting sure. Falling in love, okay, but a better metaphor might be tea-bagging in love; a slow, flavorful steeping. But happy forever? There’s a reason why Jefferson called that out as a “pursuit.”

Even in the very best relationships, let’s say Michele and Barack Obama, there’ve been times when they’ve hated, or at least irritated, the shit out of one another. Which may be why, in part, Barack adopted “hope” as his slogan. It’s easy to imagine the Obamas in a fight, Michele chastising Barack for yet again living the cereal bowl unwashed in the sink, saying this marriage is just hopeless, and Barack, all heady intellect, responding, “we need to keep hope alive!”

Btw, complaints about leaving anything in the sink, or anywhere something doesn’t belong, aren’t really about the mess or misplaced object. It’s about

respect, communication and power.

Love and happiness can intersect. Then they keep going along their own pathways, like a Pac-Man chasing after electronic dots. If you work at it, with the right attitude, the emotions can circle back again, maybe hold hands for a long while. After some therapy, paying attention, and good communication, every so often, or even for long periods, couples can live happily.

The sages have been debating it for centuries, which comes first, love or sex? Lots of people, okay, mostly men, “fall in love,” have sex, then... On the other hand, sex often leads to love. The disappearance of love after sex, or vice-versa, suggests both may no longer exist.

People argue about what constitutes sex. Is it penetration only? Does oral count? My wisdom is that sex extends far beyond physical contact. Over my life I’ve had sex, as in actual physical intimacy, for maybe 70,000 minutes. Let’s round that up to 100,000; 2,000 hours of sex. That’s a lot of sex, maybe less than you, but not bad. But I’ve slept for more than 11 million minutes.

PUBLISHER’S VIEW continues on page 8

SHORT CUTS

EV Chargers

Under a municipal pilot program, curbside electric vehicle charging stations will be installed in Dogpatch. The experiment is examining ways to make EV charging accessible to residents who lack off-street parking, a substantial challenge to plug-in adoption in a City increasingly dominated by multi-unit buildings. Upwards of 70 percent of residents don’t have access to garages. EVs are seen as an important means to reduce polluting air emissions, especially climate altering greenhouse gases. However, even with easier charging an almost 30 percent spike in Pacific Gas and Electric Company electricity rates last year, as well as federal withdrawal from climate-friendly subsidies, may serve to muffle EV sales growth, at least in the short-term.

No Driver

Daily Driver closed at the end of last year. Tamara Hicks and David Jablons, owners of Toluma Farms and Tomales Farmstead Creamery in Marin County, started the bagelry at 2535 Third Street in 2019, a welcome addition to a previous bagel desert. The two-story space in Dogpatch housed a cafe, bakery, and coffee roaster. Daily Driver grew to multiple San Francisco locations, including at the Ferry Building and Ghirardelli Square, until the dough collapsed.

No Walgreens

Walgreens will close 12 San Fran-

cisco locations this month, including the Market Street store where a security guard fatally shot alleged shop-lifter Banko Brown in 2023. Among the expired pharmacies is the 189 Potrero Avenue outlet, which was recently targeted by a gang of a dozen thieves — seven of whom were minors — who stole \$84,000 in merchandise from several stores. Perhaps its time to return to independent neighborhood medicine and sundries shop. A perfect location for such a business is 1607-1615 20th Street, a 4,663 square foot space formally occupied by a natural medicine clinic. If independent cannabis stores can pop up everywhere, why not other drug businesses?

Fine Dining

Partners David Barzelay and Colleen Booth, owners of two-Michelin-star Lazy Bear, will open JouJou, a French restaurant at 1 Henry Adams Street this summer. Reminiscent of the lofty fine-dining dishes served in the 1990s, the eatery will feature seafood barbicans, fish filleted tableside, and omelets crowned with caviar in a 6,000-square-foot remodeled space. Barzelay wants JouJou to recall an era in American restaurants, like Jeremiah Towers’ Stars, that embodied “this sense of grandness of going out,” he said. JouJou will occupy the former Grove space in the Design District. It’ll have about 120 seats, including raw and main bars, big semicircular booths and a large outdoor

SHORT CUTS continues on page 8

SUBSCRIBE

www.potreroview.net/product/subscribe

or complete the form below

YES! I love the View and would be delighted to support it by being a subscriber.

- ☐ \$68 Subscription ☐ \$132 Subscription-Benefactor
☐ Other contribution amount \$ _____

Please send my one-year subscription to:

FULL NAME _____ EMAIL ADDRESS _____
STREET ADDRESS _____
CITY _____ STATE _____ ZIP CODE _____

- ☐ Enclosed is my check. Please send, along with this form, to:
The Potrero View, 1459 18th St., #214, S.F., CA 94107
☐ I am sending my payment via PayPal to office@potreroview.net.

Tax-deductible donations can be sent to: SF Community Power, 296 Liberty Street, San Francisco, CA 94114

96 CAIRE TERRACE
PARKVIEW HEIGHTS



Nestled on a tranquil cul-de-sac in the desirable Parkview Heights community, this charming 2 bed, 1.5 bath townhome offers the perfect junction of serenity and convenience in coveted Potrero Hill.



Claudia Siegel, CRS.
DRE 01440745
Ranked Top 1.5% Nationwide
415.816.2811
claudia.siegel@compass.com



COMPASS

THE POTRERO VIEW
Serving Potrero Hill, Dogpatch, Mission Bay and SOMA • Since 1970

LEGACY BUSINESS
SAN FRANCISCO

PUBLISHER Steven J. Moss
ACCOUNTING MANAGER Catie Magee
MARKETING MANAGER Richard Romero
PRODUCTION MANAGER Helena Chiu

THIS MONTH'S CONTRIBUTORS
Thomas Hunter II, Rebekah Moan, Steven J. Moss, Julissa Salazar, Chaitanya Tondepu, Jessica Zimmer

Editorial and policy decisions are made by the staff. Published monthly.
Address all correspondence to: THE POTRERO VIEW, 1459 18th Street, Number 214, San Francisco, CA 94107 • 415.643.9578
E-mail: editor@potreroview.net • production@potreroview.net (for advertising)

THE VIEW IS PRINTED ON RECYCLED NEWSPRINT WITH SOY-BASED INK.

Copyright 2025 by The Potrero View. All rights reserved. Any reproduction without written permission from the publishers is prohibited.

What Dogpatch Can Teach Potrero Hill

BY PRODAN STATEV

Late last year three families on my Potrero Hill block departed San Francisco. This exodus, part of a regular pulse of partings, isn't just a matter of statistics; it's a loss of neighbors. Their children no longer play at Jackson Park or attend Daniel Webster Elementary School.

Why do so many families leave Potrero Hill? Unlike Dogpatch residents, Hill dwellers have resisted new residential development. This may seem like a prudent way to protect community cohesion, but it does the opposite. University of California, Berkeley researchers found that within a half mile of new apartments in San Francisco monthly rents dropped by between \$20 and \$40 compared to similar areas without recent construction. Even more striking: longtime residents were 17 percent less likely to be forced to move to cheaper neighborhoods. New housing served to protect existing residents.

In Dogpatch, new buildings have funded significant community improvements through impact fees, including helping to pay for wider sidewalks and Crane Cove Park. A growing population and improved amenities have nurtured small businesses. Areas that said "no" to housing got none of these benefits.

The Upjohn Institute tracked what happened when people moved into new buildings across several cities, including San Francisco. It found that each new structure sparked a chain reaction of moves that freed up housing across the municipality, ultimately helping dozens of middle and lower-income families find homes they could afford.

This points to a counterintuitive truth: building market-rate housing helps prevent gentrification. When we don't build enough housing, wealthy newcomers compete for existing homes, driving up prices and pushing out long-time residents. We've seen this play out in neighborhoods like the Mission, where a lack of new construction led to more displacement, not less. But in areas that welcomed new housing, research shows that existing residents - especially middle and working-class families - are better able to stay in their homes. It turns out the best way to stop wealthy people from taking over current housing is to give them new places to live instead.

Recent residential development along 18th and Mariposa streets paid for community improvements through impact fees, including a reimaged Jackson Park. Most importantly, the buildings are now home to the kind of families that make up our community's backbone, like the teachers who will live there and walk to work at Daniel Webster.

The math is simple: neighborhoods that welcome thoughtful development maintain the diverse mix of residents that makes them vibrant places to live. Those that don't are slowly becoming exclusive enclaves where only the wealthy can afford to stay. The next development proposal in our neighborhood isn't a threat. It's an opportunity to keep Potrero Hill the diverse, vibrant community we love; a place where our children might actually be able to afford to live when they grow up.

Prodan Statev lives on 16th Street.



Letters to the Editor

Dear Editor,

San Francisco Safe, which was mentioned in "Burglaries Beset Dogpatch, Potrero Hill," (January), closed last year. A scandal involving misspent funds from municipal coffers and a crypto billionaire surrounds the nonprofit, spurring a criminal investigation into its finances and the January 2024 firing of its executive director, Kyra Worthy.

Furlishous Wyatt, and his former colleagues at San Francisco SAFE say they didn't get their final paychecks when the nonprofit shutdown. They lost their health insurance, were not paid out for vacation time and have not received the paperwork they need to file taxes.

Mike Lin
Bayview



GETTING INVOLVED

The Potrero Boosters Neighborhood Association | potreroboosters.org

The Potrero Boosters Neighborhood Association informs, empowers and represents the residents of the Potrero on issues impacting our community in order to develop and maintain complete, vibrant neighborhoods. We're continuing to **meet via Zoom** on the last Tuesday of each month. Go to **www.potreroboosters.org** to learn more about how to join us!

Dogpatch Business Association | dbasf.com

Dogpatch Business Association (DBA) promotes and supports Dogpatch businesses. Business owners and community members are invited to get involved!

- Join the DBA! (dbasf.com)
- Sign up for our newsletter to find out about member meetings, opportunities, and local news
- Follow us on **Instagram** @destinationdogpatch to learn more about Dogpatch businesses, events, and activities
- Explore Dogpatch through a curated wayfinding map of local businesses, available online at <https://linktr.ee/exploredogpatch>

Friends of Jackson Park | friendsofjacksonpark.org

Please help us celebrate our initial **2025: the Year of Jackson Park** event. Show some LOVE for Jackson Park by joining us on **Friday, Feb. 14th at 2:30 p.m.** for the unveiling of internationally acclaimed artist Victor Solomon's, temporary art mural on the refurbished surface of Jackson Park's basketball court in conjunction with NBA All Star weekend events. More details to follow at www.friendsofjacksonpark.org.

Green Benefit District | GreenBenefit.org

The Green Benefit District needs your support! You can still submit your petition to renew our charter. You can mail it, drop it off at the Dogpatch Hub (1278 Minnesota) or request an electronic version by emailing **info@greenbenefit.org**.

We're also accepting applications for prospective board members! We will have one NW Potrero Hill Property Owner seat, one NW Potrero Hill Tenant seat, two Dogpatch Property Owner seats, and one Greenspace Advocate seat up for election. For more information and to submit your application visit **greenbenefit.org/board-elections-2025**.

Help make the Green Benefit District greener. Sign up for planting events and other events at greenbenefit.org/volunteer. Running into an issue? Let us know at greenbenefit.org/report-a-problem

The Potrero Dogpatch Merchants Association | potrerodogpatch.com

The Potrero Dogpatch Merchants Association promotes and advocates for independent, locally owned businesses while actively supporting our neighborhood and our wonderful communities.

PREFund | prefund.org

PREFund brings neighbors together to support education and build community. Learn more and get connected at **prefund.org**

Starr King Open Space | StarrKingOpenSpace.org

Join our **monthly volunteer days** on the second Saturday of the month. This month it is February 8th at 10 a.m. **Donate** to help keep Starr King Open Space open, accessible, and well-maintained for our neighborhood.

For a \$200 annual fee your organization can be listed in Getting Involved.
Contact production@potreroview.net

FARLEY'S FOREVER

Nothing says "I love you!" like a bag of Farley's coffee (and a nice card). Come by the shop and grab a gift for your valentine.

EVERYDAY 7:00AM - 6:00PM

FARLEY'S
EST. 1989

School District Eyes Fresh Bond Funds to Make Facility Improvements

BY JESSICA ZIMMER

Last November, Proposition 2 was approved by almost 60 percent of California voters, authorizing issuance of \$10 billion in general obligation (GO) bonds to fund repairs, upgrades, and construction of kindergarten through twelfth grade schools, community colleges, and technical education facilities. The bond will cost taxpayers roughly \$500 million annually.

About three-quarters of San Francisco electorates favored the state bond. Proposition A, a municipal measure, garnered a similar level of support, authorizing \$790 million in GO bonds to construct, repair and modernize classrooms, outdoor facilities and playgrounds, build new cafeterias, improve earthquake safety, replace worn-out electrical, plumbing and HVAC systems and add safety features at San Francisco Unified School District (SFUSD) facilities. Homeowners will be charged \$12.95 per \$100,000 of assessed value annually until the bond is repaid, estimated to occur in 2047. Landlords can pass a

portion of the costs to their tenants. SFUSD’s Facilities Master Plan rates two Potrero Hill campuses, Bryant Elementary School and San Francisco International High School, as “deficient.” Since 2003, \$4.3 million in capital improvements have been made to Bryant, which this year had an enrollment of 270 students, with a capacity of 316. San Francisco International High School has received roughly a half-million dollars in facility upgrades over the past 20 years, mostly related to security locks and outdoor spaces. The school has 293 students, and a capacity of 499.

The Plan rates Downtown High School, Starr King Elementary School and Daniel Webster Elementary School as “good.” Downtown and Starr King had “excellent” ratings for their exteriors, while Daniel Webster was regarded as “good.” Since 2003 \$7.4 million has been invested in Downtown High School, \$13.3 million in Starr King, and \$12 million in Daniel Webster. This year Downtown had 134 students, with space for 225. Starr King’s enrollment was 318 students, with an ability to

accommodate 415. Daniel Webster had 341 students and a 382 capacity.

Potrero Hill, Mission Bay, Dogpatch, Bayview, and the Inner Mission’s population is expected to double over the next 30 years, as the area continues to transform from industrial land to residential developments. More students live in the southeastern neighborhoods than total school capacity.

Proposition A funds will be used to co-locate SFUSD’s new central Food Hub with the district’s main warehouse at 801 and 834 Toland Street. The Food Hub will mostly be used for storage, with space for minor meal production and supporting administrative offices.

“The 2024 bond will complete the Food Hub + Shops building, allowing SFUSD to better source and prepare food for distribution to schools,” said the SFUSD Communications Office.

SFUSD plans to add a central kitchen at the Food Hub, with capacity to produce 50,000 daily meals. Construction is likely to begin in 2028. However, the district needs more money to fully execute the scullery.

Under California Meals for All, state legislation that became effected with the 2022 academic year, public school students receive meals at no cost, no application needed.

SFUSD is developing a Schoolyard Comprehensive Plan to identify priorities for playground repair and construction, scheduled to be completed this summer. The strategy is being led by Berliner Architects, a Culver City-based architecture firm and SITELAB urban studio, a San Francisco company that’s also working on the San Francisco Municipal Transportation Agency’s Potrero Yard Modernization Project and Pier 70, among other projects.

“Part of this work includes gathering and examining feedback from San Francisco Department of Recreation and Parks and other agencies and community organizations who are doing similar improvements...an effort to understand best practices, cost-saving measures, and other important city and community priorities,” said the SFUSD Communications Office.

BURGLARIES from front page

he didn’t offer solutions or promise a response. Duffner followed up with a locksmith, who said they couldn’t rekey the door or mailboxes because doing so is USPS’ responsibility.

In the early morning of January 4, two of the same three burglars returned, this time using the stolen garage door opener to gain entry. Rather than confining themselves to mail and packages, they rifled through cars and storage units in the parking garage and roamed around the building for close to an hour. The thieves pried open storage units, pulled out various wires, which disrupted the internet, and broke into the bicycle storage room, stealing two bikes belonging to resident Shawn Troedson worth roughly \$2,500.

Although law enforcement is working to identify the suspects, they similarly told Troedson when she filed her police report that they couldn’t do anything about the access issue “because

it was a USPS problem.” The HoA has intensified security measures throughout the building, including permanently plugging the USPS keyhole to disable it, receiving mail through alternative means. Around 5 a.m. on January 5th, the thieves returned and again tried, this time unsuccessfully, to enter the building with the USPS key.

“I know they came back because someone had clearly tried to put a key in the slot,” Duffner said. “They are persistent for sure.”

Troedson said she posted the incident on Nextdoor and learned the same thing happened to buildings on Third Street and Tennessee Street.

Dogpatch residents raised the string of burglaries at a January Community Police Advisory Board meeting. A lieutenant took notes but didn’t offer additional information or remedies, according to Troedson.

“Unfortunately, USPS and SFPD didn’t provide any solutions on how to



stop these same thieves from coming back again and again, so we’ve taken it upon ourselves,” she said. “This is in the hands of owners and residents in Dogpatch. We remain vigilant and want to keep neighbors up to date that this happened, and their building could be next.”

Despite the theft, for the first half of January burglaries were lower in the area served by the Bayview Station, which

includes Potrero Hill and Dogpatch, by 36 percent compared with the same period in 2024, according to SFPD’s crime dashboard. This follows a trend of diminished crime in the City overall. Shortly before Mayor London Breed left office she reported that robberies fell 22 percent, burglaries 11 percent, in 2024, pushing San Francisco’s crime rate to its lowest level since 2001.

Youth & Teen
Summer Programs

Dance Classes for Ages 2+

odc.dance/summer

COME BE PART OF A WELCOMING,
WARM, INCLUSIVE FAITH COMMUNITY

ST. TERESA OF AVILA
CATHOLIC CHURCH

1490 19TH STREET (AT CONNECTICUT STREET)

“In this house all are friends, all are loved, all are helped, all are held dear.” — ST. TERESA OF AVILA

ASH WEDNESDAY
MARCH 5
MASS WITH
DISTRIBUTION OF ASHES

8:30am, 12:15pm & 7:00pm

SUNDAY MASSES

Saturday Vigil 4:15 pm
Sunday 8:30 am
10:00 am

WEEKDAY MASSES

Mon — Fri 8:30 am

[www. StTeresaSF.org](http://www.StTeresaSF.org)

St Teresa of Avila Church is an EPA ENERGY STAR® certified building.

PARISH OFFICE/MAILING ADDRESS

390 Missouri St
San Francisco, CA 94107
415.285.5272

Rebirth

BY CHAITANYA TONDEPU

If you're lucky, or work at it, the regularity of life is occasionally marked by transformative moments that create a bridge between dispirited endings and promising beginnings. Anna Hennessey's immersive art installation, *Rebirth Tunnel*, offers an intentional exploration of such junctures.

Hennessey had a cathartic experience on a trip to Ireland with her kids. She wanted to reconnect with her Irish American family's ancestry but was wary of a place associated with people that'd caused her considerable pain.

"I think I went because I need to say goodbye but also reconnect to the Earth and to my ancestors," said Hennessey. "I decided I wanted to mark that moment in some way, so I told my children and wrote out all the names of my family members along with some of the events that had happened. We went by the River Shannon, I read aloud what I wrote, and then the three of us ripped up the paper and we buried it in the mud by the river. I thought it was just something that I needed to do to mark that moment, but it actually made me feel like a changed person."

Hennessey, who has studied rebirth through art in different cultures and is cofounder of the San Francisco Birth Circle, decided to create a passageway for others to transform their lives. With funding from The American Academy of Religion, Western Region (AARWR) she installed her first "Rebirth Tunnel" at the annual AARWR conference at the University of Nevada, Las Vegas last



Left: Re-Conception Pod, part of the Rebirth Tunnel. PHOTO: Chaitanya Tondepu Right: The Rebirth team stand under the tunnel at the Nabe. Anna Hennessey, dressed as a Rebirth Midwife (middle left), Ernestine Bernard, clothed as Rebirth Doula (second to the left), and Jennifer Dhillon from the BBG (middle right). PHOTO: Anna Hennessey

year. Participants reacted positively to the piece.

"It was a very diverse crowd and pretty much everybody had some foundational experience," mentioned Hennessey. "People later wrote to me just to say how special it was for them. A middle-aged man and his wife who had gone through the Rebirth Tunnel mentioned that it was life-changing for them, and that they hoped their 20-something year old son would be able to do it someday. So, it seems meaningful for people."

A "Rebirth Doula" and "Midwife" guide visitors through the journey. Participants first step into "Re-Conception Pods," enclosed chambers designed for quiet reflection. They're prompted to take five deep breaths to center themselves before writing down an aspect of their lives they wish to release or

transform. They then proceed alone under the Rebirth Tunnel, where positive affirmations resound, reinforcing a sense of hope and renewal. At the trip's midpoint they encounter a "Renewal Box," a symbolic station where they can tear up and discard their writings, physically releasing past trauma, welcoming new possibilities. Emerging from the tunnel, the participants sign and receive a "Rebirth Certificate."

After installing the Rebirth Tunnel in other locations, Hennessey collaborated with Jennifer Dhillon of the Bounce Back Generation (BBG), a nonprofit organization started in Potrero Terrace-Annex, to mount it at the Potrero Hill Neighborhood House (Nabe) last month. BBG's mission is to help Hill youth respond with resilience to adverse childhood experiences and traumas. Its previous projects include the *Walking School Bus* and *Family Laid Back Nights*. The Rebirth Tunnel

was featured alongside BBG's film about how public housing residents have become stronger even after undergoing numerous ordeals.

"Unfortunately, we had to shut everything down when COVID hit, so we started to film our experiences through those years," reflected Dhillon. "Now it's almost five years later, and we've become a nonprofit media company that helps people develop their own tools for resilience while still working with public housing. Anna reached out to me for a mini grant from BBG, and we started talking about doing this together and getting the community involved."

The Rebirth Project is also supported by the Luce Foundation and American Academy of Religion for Art in Public Spaces. Hennessey plans to install another Rebirth Tunnel at the Harvey Milk Center for the Arts in the Haight this summer.



4000 24TH ST @ NOE ST

NOVY

GREEK RESTAURANT



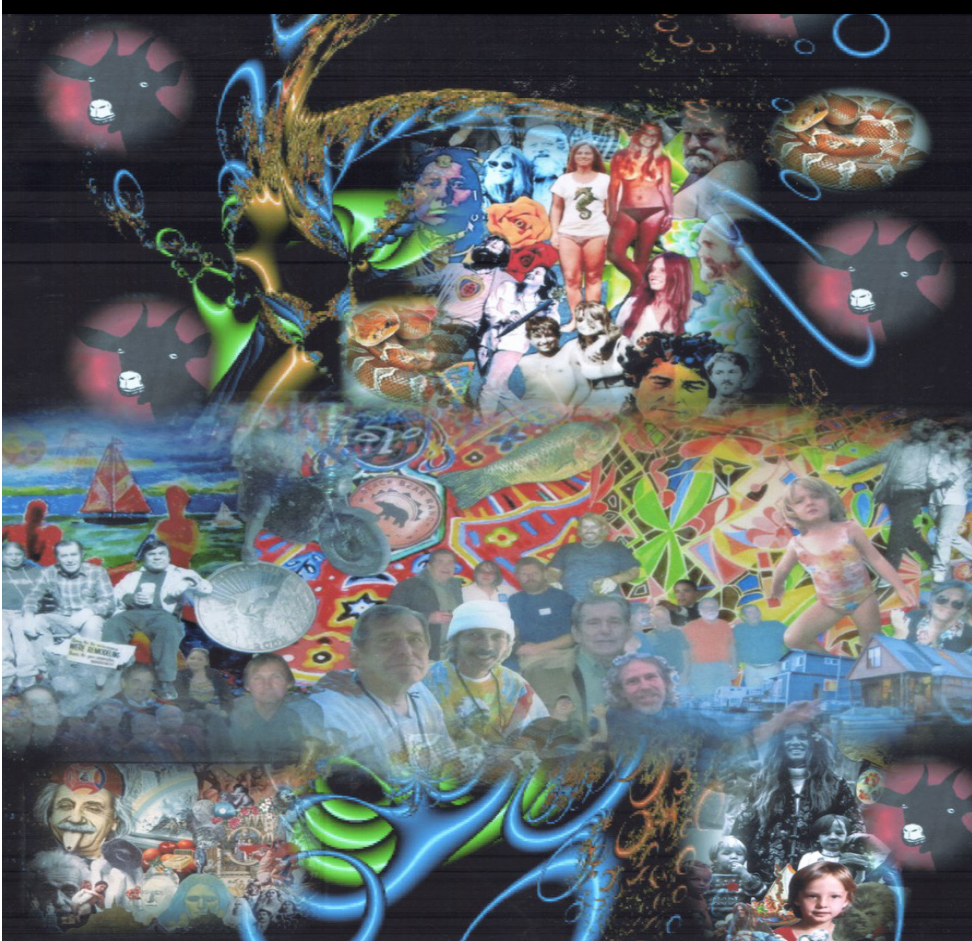
NOVYSF.COM
(415) 829-8383



Artist Reception


Judith Watson Davis

Tuesday, February 18th 4-7pm



Goat Hill Pizza

SOURDOUGH PIES
★ SINCE 1975 ★
SAN FRANCISCO
POTRERO 415-641-1440



COMMUNITY | FEBRUARY

2/1 Saturday through 3/8 Saturday
Craft: Hat Knit-Along
A beginner-friendly six-week hat knitting course led by Hannah Milstein, a multimedia artist, former teacher, and knitting wizz. The knit-along will break down a beanie pattern that Milstein creates exclusively for this course. Pre-registration required; ten spots available. Saturdays 11 a.m. to 1 p.m. \$275 to \$375. Museum of Craft and Design, 2569 Third Street. For more information: <https://tinyurl.com/2e8fxfhf>

5 wed

History: Walking Tour of Mission Bay
From muddy tidal estuary inhabited by the Yelamu, to a rail and shipping nerve center for San Francisco, to home of emerging biotech companies and the City’s newest neighborhood, Mission Bay offers a glimpse of the future with a storied past. 2 p.m. Free; donations welcome. Meet at the park benches on the San Francisco Public Library’s south side, 960 Fourth Street. This tour occurs several times a month, hosted by San Francisco City Guides. For more information: <https://bit.ly/40ljT8V>

Music: Prince’s Purple Rain
An evening of listening dedicated to Prince’s Grammy award-winning album. The first record to feature The Revolution, with two number one singles, *Purple Rain* cemented Prince’s standing as his generation’s preeminent pop genius. Envelop up mixed this legendary LP for an immersive experience within Envelop SF’s 32 speakers. 7:30 p.m. Tickets \$32.25. Envelop SF, 900 Marin Street. For more information: <https://bit.ly/40KSxL2>



2/6 Thursday through 2/13 Thursday
Film: Mostly British Film Festival
Featuring more than two dozen films, new and classic, from the United Kingdom, Ireland, Australia, India, South Africa, and New Zealand, festival highlights include opening night’s *The Penguin Lessons*, starring Steve Coogan portraying an English teacher who attempts to get his young charges at a private academy in Buenos Aires to grasp the subtleties of poetry, a task made more difficult given that these scions of privilege and wealth live under the cloud of Argentina’s repressive 1976 right-wing dictatorship. An Evening with Hugh Bonneville (*Downton Abbey*, *Paddington in Peru*) welcomes Mr. Bonneville to the Vogue with festival artistic director, Ruthe Stein, to discuss his long and varied career, concluding with a screening of *From Time to Time*, a family drama from *Downton Abbey* creator Julian Fellowes, starring Bonneville and the late Maggie Smith. Vogue Theater, 3290 Sacramento Street. For more information: <https://bit.ly/4h9V1I6>

6 thur

Art: Unveiling of Marco Cochrane’s “R-EVOLUTION”
Union Square will host the unveiling of Marco Cochrane’s “R-EVOLUTION,” a 45-foot-tall kinetic sculpture of a woman, symbolizing feminine strength and empowerment. The artist will be in attendance. Enjoy Burning Man-inspired music, live DJ performances, photo opportunities with the sculpture, a full bar, food and lighting display by Illuminate and Mad Alchemy. The first 200 guests will receive an artist poster. 4 to 8 p.m. Free. Union Square, 333 Post Street. For more information: <https://bit.ly/4joqVCr>

7 fri

Business: Potrero Bus Yard Infrastructure Facility
Webcor (Prime Contractor) and Arcadis (Lead Designer) will answer questions from disadvantaged small and local businesses. Light refreshments will be provided. 10 a.m. to 12 p.m. Free. Verdi Club, 2424 Mariposa Street. For more information: <https://tinyurl.com/yn26jxrv>

13 thur

Music: Perry Sings Sinatra
Enjoy appetizers, handcrafted cocktails, and Sinatra’s timeless classics. Perry D’Andrea won the 2022 Hoboken “My Way Sinatra Sing-Off,” the definitive international Sinatra singing competition. Proceeds benefit Verdi Club’s Ramp Up! project, bringing wheelchair accessibility to the historic venue. 6:30 p.m. Tickets from \$132.23. Verdi Club, 2424 Mariposa Street. For more information: <https://bit.ly/4g6gd0M>

15 sat

Lunar New Year: Parade
Featuring nearly 100 groups, the Chinese New Year Parade in San Francisco is the biggest procession celebrating the Lunar New Year outside Asia. Fireworks show after the parade to be set off from Union Square. Parade route: Second at Market streets to Kearny Street and Columbus Avenue. 5:15 to 8 p.m. Free standing room; bleacher seats start at \$45. For more information: <https://chinese-parade.com/>

2/15 Saturday and 2/16 Sunday
Printing: Monotype Workshop
Work with reductive and additive monotype techniques as well as transparent roll ups, botanical images, chine collé, stencil and photocopy gum transfers. Maximum of eight participants a day; those taking both sessions given priority. 10 a.m. to 4 p.m. One day: \$200. Two days: \$300. Graphic Arts Workshop, 2565 Third Street, Number 305. To enroll: Kathryn Kain, kk@cailech.com or 408.230.8629. For more information: <https://bit.ly/4jprZ9e>

16 sun

Art: Ceramics Workshop
Hands-on clay workshops taught by artist members. Finished pieces can be picked up from RedBrick Studio four to five weeks after being made. 1 to 3 p.m. \$28.52 per person. RedBrick Studio, 2111 Mission Street, Third floor. For more information: <https://bit.ly/4g8XhOI>



History: Walking Tour of Dogpatch and Potrero Point
Dogpatch was once the home of iron works, shipyards and other heavy industry. View historic working-class cottages and industrial age relics; preview Pier 70’s transformation from an abandoned maritime complex to mixed-use development. Delve into the neighborhood’s colorful past, featuring fascinating stories of working-class people. 11 a.m. Free, donations welcome. Meet at Illinois and 20th streets. This tour occurs several times a month hosted by San Francisco City Guides. For more information: <https://bit.ly/4gVDPzP>

19 wed

Food: The Politics of the Plate
Food is far more than sustenance; it’s a repository of identity, marker of history, and subtle yet potent instrument of power. Join authors Anna Voloshyna, *BUDMO: Recipes from a Ukrainian Kitchen*, and Kate Leahy, *Lavash: The Bread That Launched 1,000 Meals*, for a conversation on the intricate connections between cuisine and politics. 6 p.m. Tickets: Mechanics’ Institute Member \$7.18; Non-member \$17.85. Mechanics’ Institute, 57 Post Street. For more information: <https://bit.ly/4jiuWsl>

22 sat

Literature: Pier 23 Café Pop-up Book Fair
Meet local writers, get your favorite books signed, enjoy waterfront views,

CALENDAR continues on next page

BROUGHT TO YOU BY THE
POTRERO NEIGHBORHOOD COLLECTIVE



MEET THE PRIMES
Potrero Bus Yard Infrastructure Facility

FRIDAY, FEBRUARY 7
10:00 A.M. to 12:00 P.M.

Verdi Club, 2424 Mariposa St, San Francisco
Accessible via Muni routes 9, 27, 33, and 90.
Street parking available.

Light refreshments will be provided.

FOR MORE PROJECT INFORMATION
visit [SFMTA.com/PotreroYard](https://sfmta.com/PotreroYard)

NETWORK WITH THE PRIMES



CHOREOGRAPHY
SHOWCASE

FEB 14 – 23
Smuin Center for Dance | San Francisco

SMUIN
CONTEMPORARY BALLET
AMY SEIWERT / ARTISTIC DIRECTOR

smuinballet.org | 415.912.1899





**START THE NEW YEAR
WITH SMUIN!**



ONLINE &
IN PERSON
CLASSES FOR
ADULTS AND
CHILDREN

SMUIN
CENTER FOR DANCE

Come visit us @ 1830 17th St. San Francisco CA, 94103

CALENDAR from previous page

with food and drinks available from Pier 23 Cafe. Free admission. 4 to 7 p.m. Pier 23 Café, 23 Embarcadero. For more information: <https://bit.ly/40ELTPk>

Music: “An Afternoon of Chamber Music”
An intimate concert featuring chamber music from Bay Area musicians, hosted by the San Francisco Civic Music Association. The Chamber Music Concert Series or “Afternoon of Chamber Music” is held monthly through June 14 and introduces audiences to a range of chamber ensemble performers. 3 to 5 p.m. Free. Noe Valley Ministry, 1021 Sanchez Street. For more information: <https://bit.ly/48cVO81>

23 sun

Animals: Bark at SPARK “Puppy Love”
Cupid’s bow is loaded and ready with adoptable pups ready to capture your heart, pet-centric vendors to spoil the “ruff” of your life, and activities you and your whelp are guaranteed to “dig.” 11 a.m. to 5 p.m. Free admission. SPARK Social SF, 601 Mission Bay Boulevard. For more information: <https://bit.ly/4gjtRT3>

2/27 Thursday through 3/2 Sunday Gardening: Pacific Orchid Exposition
This event will showcase themed flower displays, expert advice on growing orchids, and a stunning array of rare orchids. Plants will be for sale from San Francisco Orchid Society members as well as local, national, and international nurseries. Preview Night fundraiser: Thursday 6 to 9 p.m. Friday through Saturday 10 a.m. to 5 p.m. Sunday 10 a.m. to 4 p.m. Tickets from \$3.50. San Francisco County Fair Building, 1199 Ninth Avenue, Golden Gate Park. For more information: <https://bit.ly/4hpLRHC>



Business is blooming at the recently relocated San Francisco Flower Market located at 901 16th Street. PHOTO: Thomas Hunter II

Advertisement

From Studio to Spotlight: Smuin’s Choreography Showcase Unveils Bold New Works

Smuin Contemporary Ballet’s much-anticipated Choreography Showcase offers a thrilling look at the future of dance at its intimate Potrero Hill studio. Performing February 14 to 23, this one-of-a-kind program invites audiences to preview ten short works crafted by the company’s dancers. Ranging from humorous to heartfelt, each piece explores a unique blend of dance styles and musical genres, reflecting the company’s talent and creativity. Under Smuin Artistic Director Amy Seiwert, a celebrated choreographer and former company dancer, ten Smuin artists—AL Abraham, Tessa Barbour, Jacopo Calvo, Maggie Carey,

Julia Gundzik, Cassidy Isaacson, Marc LaPierre, Shania Rasmussen, Yuri Rogers, and Brennan Wall—will debut their creations. This opportunity for audiences to experience exciting new dances by first-time and rising dancemakers was inspired by founder Michael Smuin’s dedication to developing choreographic talent. “This program is all about investing in our dancers as artists,” said Seiwert. “We’re giving them the tools to grow into the next generation of creative leaders.” The dancers-turned-choreographers undertook every aspect of bringing their works to life: selecting music, designing movement, col-

laborating on lighting, stagecraft, and costumes. Pre-show talks, at 1:15 p.m. before each Saturday matinee, offer audience members a behind-the-scenes look at the creative process and how dancers transformed their ideas into fully realized works. “These are the only public performances presented here at our home studio,” said Seiwert. “We are particularly excited to share this program with our Potrero Hill neighbors, who have been so welcoming to Smuin since we joined this community.” For tickets, \$35 to \$55, or more information: smuinballet.org; 415.912.1899.



Hiba Academy
Bay Area

Wellington College Education

Let us widen your child’s world with
an innovative English-Chinese
bilingual education.

Minds
Wide
Open

Early Years Virtual Sessions
February 11 & March 4

Primary Virtual Sessions
February 13 & March 11

Meet our Founder and
Head of School
March 15 & 18

Rigorous Academics
Multicultural Experiences
Personal Well-being

Campus Location:
99 Rhode Island Street, San Francisco

Discover the Difference.
Scan to register for a session.

bayarea.hibaacademy.org
admissions.bayarea@hibaacademy.org



POTRERO VIEW LOCAL BUSINESSES DIRECTORY

CLASSIFIED ADS

LOVE

SF

It all starts in our hearts.

lovesf.com

Get your LOVESF merch at Rickshaw Bagworks

R

RICKSHAW

Backpacks, Shoulder Bags
Fanny Packs, Tote Bags
Pen Cases, Pouches, Accessories

Retail Store Hours: M-F, 11-5

904 22nd St.
rickshawbags.com

Sewing Strong in Dogpatch
Since 2007

Looking for an affordable Potrero Hill streetfront office or professional space? 1,025 sf groundfloor corner spot available on Mariposa at Texas St. Easy walk to MUNI, hospital, 18th St, or bike the flats. Standard commercial leasing terms offered: email maripos59-leasing@yahoo.com for info.

BAR

piccino

THE PERFECT PLACE TO START YOUR NIGHT, SPEND YOUR NIGHT, OR END YOUR NIGHT.

WWW.BARPICCINO.COM / @BARPICCINO

YUMMY COFFEE

GRAB N' GO FRIDGE

piccino

CB

COFFEE BAR

845 22nd Street
San Francisco, CA 94107

LOCAL BUSINESS DIRECTORY PRICING*					
Square	BW	COLOR	Rectangle	BW	COLOR
1 month	\$75	\$175	1 month	\$100	\$200
3 months	\$125	\$250	3 months	\$225	\$450
6 months	\$225	\$450	6 months	\$405	\$810
12 months	\$405	\$810	12 months	\$730	\$1,460
* Prepaid in full. Not eligible for additional discounts.					
415.643.9578 production@potreroview.net potreroview.net/advertise/					

SHORT CUTS from page 2

patio enclosed with a glass and metal structure. Jon de la Cruz, who created the look of restaurants like Che Fico, is designing JouJou.

Robot Parade

Potrero Hill residents have noticed an increased concentration of **Zoox** cars learning by doing near **Daniel Webster Elementary School**. On at least one occasion four test vehicles drove on Texas Street, between 18th and 19th, in the space of roughly 60 seconds. Likewise, Zooxs periodically jam the **Chevron Corporation** gasoline station at 17th and Potrero, spilling onto the street, crossing the bicycle lane, and generally mucking up traffic. Perhaps one should be sympathetic to what amounts to teenage drivers, but Zoox might want to be mindful of the lessons learned by dearly departed Cruise.

PUBLISHER'S VIEW from page 2

Probably driven in a car for more than a million minutes.

And I've thought about sex, dressed in a way that I hoped would attract sex, traveled for sex, listened with intense boredom for long periods of time to someone who I wanted to have sex with, for perhaps a billion minutes. And most of these minutes, they were not successful. I'm probably writing this with some amorphous idea that it'll result in sex. I bet there are people reading this, in search of something to talk about on a date, as a way to get sex. I apologize.

We're a nation of conspiracy theories. We love 'em! 9/11 was an inside job. The Egyptian pyramids? Built by aliens! Several months ago, I encountered a fellow walking on a beach in Marin, who told me, his eyes glittering with the sure knowledge of his rightness, that the earth was flat.

I said, "metaphorically, right?"

"No, for real," he responded, without blinking. I nodded and kept walking.

The biggest, the *UR* conspiracy, is that we all live in the matrix, a kind of simulated related control by a powerful

Seeking Tennis Partner

Sixty-something male intermediate tennis player looking for (semi) regular rally or game partner. Email editor@potreroview.net

Legal Notices

The View accepts legal notices. Please contact: production@potreroview.net; 415.643.9578.

Freelance Writers Wanted

Modest pay, interesting assignments. Contact: editor@potreroview.net

Write Your Own Obituary

We're all going to die; why leave the writing of your obit to someone else? Whether you believe the end is imminent or just something you contemplate idly whilst taking a shower, you can control your own destiny, or at least how it's reported. Or, after examining your life story and finding it lacking, add to it! Up to six people in three two-hour sessions, \$150. Interested parties should contact editor@potreroview.net

Got something to sell? Have a service to provide? Each classified ad is \$25 for up to 200 characters. www.potrereview.net/advertise

AI-type overlord.

The thing is, we do, kind of. Not the sci-fi matrix Neo encounters. It's a day-to-day mostly consensual reality we, together, on purpose or without thinking about it much, created and abide by.

We drive down asphalt-paved roads, through an environment that's completely shaped by humans, including the weather. Nothing we see is untouched by people. We stop at red lights, the time we spend waiting programmed by someone else. If we take off our seat belt, an alarm incessantly rings, sound-controlling us to put it back on. Some cars automatically brake if they get too close to something. If you're driving a Tesla you seem to have an uncontrollable need to act like an asshole, probably through some weird mind-meld with the car's creator.

It's for our own good, a collective consensus that makes things work. But the pattern, the good-natured or bureaucraticly enforced control, extends everywhere.

Walk into a supermarket, what's the first thing you see? Fruits and vegetables. As you check out, what's the last thing? Candy. Back in the day it'd be cigarettes. We're channeled through the best and worst of our inclinations, from farm to processed sugar. All under the watchful eyes of the inevitable guard standing, decked out with gun and sometimes bulletproof vest, at the exit. I imagine him pulling his weapon to check my receipt, making sure I have the right balance of Doritos and apples. Meaning no apples.

"Put the apple down!" he'd yell.

"The apple is to message wholesomeness, not to be purchased or eaten!"

The proper name for the matrix is capitalism. Capitalism creates and spits out the rules, products, and patterns by which we live. Whether rich or poor, capitalism is culture's testosterone, our driving force, our consumed or be consumed. As we enter into Trump II,

PUBLISHER'S VIEW continues on next page

CITY AND COUNTY OF SAN FRANCISCO

Community Outreach Public Notice

Prepared by The Office of the Clerk of the Board of Supervisors Pursuant to Administrative Code, Section 2.81

San Francisco Board of Supervisors Board or Commission Vacancies:

Participate on a Board or Commission!

The Assessment Appeals Board (AAB)

The AAB resolves legal and value assessment issues between the Assessor's office and property owners. Hearings are quasi-judicial, conducted in a manner similar to a court setting, with evidence and testimony presented by the parties. The Board then evaluates the evidence and testimony and renders its decision. To be eligible for seat appointment, you must have a minimum of five years professional experience in California as either a: (1) public accountant; (2) real estate broker; (3) attorney; or (4) property appraiser accredited by a nationally recognized organization, or certified by either the Office of Real Estate Appraiser or the State Board of Equalization.

For a full list of current or upcoming Boards, Commissions and Task Forces, please visit <https://sfbos.org/vacancy-boards-commissions-task-forces>.

Want to work for the City?

Visit the website <https://careers.sf.gov/> and find a job that's right for you!

Department Announcements

Airport

Job Seekers and Business Owners: Find New Opportunities for the New Year at SFO's 2025 Resource Fair! The fair is a one-of-a-kind event designed to connect job seekers with Airport employers and provide businesses with access to information and opportunities at SFO. Whether you are new to the job market or an experienced professional, a small or a medium-sized business, come learn about the opportunities that SFO has to offer! Date: February 13, 2025 Time: 9:00 a.m. to 1:30 p.m. Location: San Mateo County Event Center. Contact: Call/text: 650-456-7966 or email: community@flysfo.com. Register at: <https://forms.office.com/g/YvwaQA7R82>.

Assessor-Recorder

Assessor-Recorder Joaquin Torres Public Service Announcement -- Homeowners' Period for Requesting Reductions in Assessed Value Begins: If you believe your property's assessed (taxable) value is higher than the market value, you can request an Informal Assessment Review for a temporary decline in value between January 2 and March 31, 2025. This service is free of charge and is available to property owners in a single-family dwelling, residential condominiums, townhouses, live-work lofts and cooperative units. For more information: <https://www.sfassessor.org/>.

Department of Public Health

Count on WIC for Healthy Families!

WIC is a federally funded nutrition program for women, infants, and children. You may qualify if you:

Are pregnant, breastfeeding, or just had a baby;

Have children under age 5; and

Have low to medium income; and/or

Receive Medi-Cal, CalFresh (Food Stamps), or CalWORKS (TANF) benefits; and

Live in California

WIC Provides: Nutrition education and health information, breastfeeding support, food benefits for healthy foods (like fruits and vegetables), referrals to medical providers and community services

Learn more at: [MyFamily.wic.ca.gov](https://www.sfcityattorney.org/report-a-complaint/) or www.wicworks.ca.gov

Enroll early! Call today to see if you qualify and to make an appointment- (628) 206-5494 or (415) 657-1724

This institution is an equal opportunity provider

Child Support Services

Child support matters can be complicated, stressful, and confusing. The Department of Child Support Services helps parents understand the process so they know their rights and options for making and receiving support payments. We are available to assist you in person or by phone. Virtual services are also available. Call us today at (866) 901-3212 for more information. Enroll online or schedule an appointment at sf.gov/dcss to learn how we can help you.

City Attorney Office

The San Francisco City Attorney's Office is committed to protecting consumers and members of the public. We investigate and prosecute businesses that deceive or defraud consumers, as well as property owners that maintain properties in substandard conditions or violate housing laws. Members of the public who wish to report a consumer complaint should contact the Office through its hotline at (415) 554-3977 or its web portal at <https://www.sfcityattorney.org/report-a-complaint/>. Our office will review the information you provide and may seek additional information from you. Please note, however, that we are not authorized to represent you as your lawyer or provide you with legal advice. Any actions we take are on behalf of the community as a whole.

Office of Economic & Workforce Development

Discover what's happening in downtown San Francisco with the free events calendar on SF.Funcheap.com! From live events to restaurants and shops, downtown is buzzing with opportunities to have fun. Our small businesses are at the heart of this vibrancy, shaping the San Francisco experience we all love. If you're an entrepreneur or small business owner, visit SF.gov/OSB for resources to start, grow, and sustain your business.

The City and County of San Francisco encourages public outreach. Articles are translated into several languages to provide better public access. The newspaper makes every effort to translate the articles of general interest correctly. No liability is assumed by the City and County of San Francisco or the newspapers for errors and omissions.

SF.GOV

CNSB#3889264

Why am I not wanted by my school?

Julissa Salazar, 14, an eighth grader at Live Oak Middle School, wrote this poem from the perspective of a student experiencing the “School-To-Prison” pipeline.

Why am I not wanted by my school?
And put aside,
My needs unaddressed,
Sent to the office,
Arrested,
Put in handcuffs,
Thrown into the police car,
Now Momma’s crying,
Dad’s crying,
I’m crying.
Why am I not wanted by my school?
I feel trapped in the walls of security,
Slowly suffocating day by day,
Or should I say my school,
A place that should feel like a home,
To grow and learn.
But no,
That isn’t the case,
You’re just greeted with an agitated dog
sniffing for drugs.
Bloodshot eyes locking contact with you.
Barks and
Drool slipping out the mouth like a
waterfall.
Police running the metal detectors,
Staring at you every move
I can only ponder my eyes on the weap-
ons they carry in their pockets,
Sitting there,
Being there.

Why should a weapon that causes too
much pain be in the hands of someone on
school grounds?
Praying,
It won’t be used on me,
Praying I won’t be next,
I didn’t do anything,
But sometimes there can be no motive
and you still get bashed against the
cold,
concrete,
floor,

pressing against your delicate skin.
“Hands behind your back,”
They say,
Blood dripping off your face,
People crowding the scene,
Murmuring, “You deserve it,”
Murmuring, “Who are they,”
Why them,
Accusing me with their eyes,
People looking,
People whispering.
They say you’re misbehaving,
“Go to the office,”
Get arrested,
They say that you talked back,
“Go to the office,”
Get arrested,
They say you’re disruptive,
No I just don’t understand,
Please try harder and don’t give up on
me,
I’m still worth it.

Don’t you ever consider if I left school
with a empty stomach,

No food in the fridge,
My stomach wanting food,
Making noise in class,
I’m confused in the lesson,
So I occupy my time,
Talking,
Waiting,
Wondering,
Until someone,
Just someone
Understands,
The struggle.
Why’s the color of my skin targeting me?
I was born this way,
Why’s my disability an issue,
I was born this way.
I ask myself,
Is there hope,
If no hope
Is there?

I’m put in court,
Buttoned up,

Hair slicked back,
Eyes watering,
Dripping from my cheek,
I plead guilty.
Eyes looking at me from every direction,
It was all a blur,
But the screams of my parents,
And the aggressive bang of the gravel,
Were ingrained in my head,

I remember the grip of security escort-
ing me to juvy,
I’m 13,
Only 13 years of my life,
And some going to waste,
Life is going to waste.
I’m sitting on the bunk of the jail cell,
Engraving the days till my incarceration
is over,
Imagining the warmth of my parents’
hugs,
And how the fresh air would smell,
And how the breeze would touch my
skin.
The feeling of freedom,
The feeling of tranquility,
The feeling of positivity,
The feeling of knowing what’s next.
What is next,
What’s next?
shouldn’t it be crystal clear,
But that wasn’t the case for me,
See,
Many adolescent have to go through,
Dropout,
Arrest,
Anxiety,
No more self esteem,
Because the steam that fueled me failed
to help me.
Millions of students with potential get
pushed away,

Suspended,
Locked away,
Thrown away.
Incrimination of the youth,

Is not the way for a better
World.
Incrimination of the youth,
Does not do any good.
This discipline is next level absurd.
Why is it this way?
Why is it this way?
Why is it this way?
This crushes families,
Ruins relationships,
Discourages kids to want to learn,
Because they know that no one’s there
for them in school.
In 10 years,
120 months and
87,600 hours,
I hope,
There are going to be schools that don’t
fail their students.
And not worry about insufficient
funding.
In 10 years,
120 months and
87,600 hours,
I hope
Kids won’t be late to class because secu-
rity measures make them late to school.
They won’t fear school anymore,
They won’t feel discouraged anymore,
For how they look or are capable of.
School will feel like a haven of learning,
School will feel secure,
School will feel exciting,
School will feel hopeful.

Why am I not wanted by my school?

PUBLISHER'S VIEW from previous page

the sensation of being inside a pattern that cannot be changed will no doubt deepen, at least for those of us who thought we had more agency. Awareness of the feeling is an important step towards changing it.

As you age you become invisible. You’re no longer a sexual object. No one’s head turns as you walk by, unless maybe you drop your keys. And nobody, ever, asks, suggestively, “whose your granddaddy?” Not even in the gay community.

People don’t want your recommendations for music or where to get the best burrito. They may ask if you’re still working, if you’re retired, if you plan on moving to an “adult living” type place. Whether you want to be buried or cremated.

We forget, though, being invisible is a superpower!

In one survey, when asked what superpower they wanted most three percent chose invisibility; like Violet from *The Incredibles*. That might not seem like a lot, but it was way higher than the percent who wanted to be super flexible or have super senses. Apparently, nobody wants to be really flexible or have extra sensitive taste buds. They want to be old!

Being invisible is a limited superpower. You can shoplift or hang out in places and creepily watch people with-

out being noticed, like locker rooms or the like. You can walk into fancy hotel lobbies without being bothered and use the bathroom at a restaurant without eating there. Of course you can usually do these things anyway, if you’re white.

The super power people wanted most was teleportation. Also, by the way, the survey was done for members of the “The Asexual Visibility and Social Network,” asexuality being another superpower, given how much trouble the pursuit of sex gets us into.

ADVERTISE
IN THE VIEW!

Reach dedicated
readers who care
about local
businesses

Great rates!

www.potreroview.net
/advertise/

SF Working
Families
Tax Credit

Get up to an extra \$250 back on your
taxes. You can use an ITIN to apply for
the working families credit.

Apply online or get an application at:

SFHSA.org/FreeTaxHelp

Call (415) 557-6284 for help
getting an application

GBD from front page

In 2023, approximately 87 percent of the GBD’s assessment funding originated from Dogpatch (designated as “Zone 1”), while 13 percent was collected from Northwest Potrero Hill (“Zone 2”). Accordingly, of the 15 board of director seats, 80 percent are occupied by Dogpatch property owners and tenants, with the remaining set aside for NW Potrero Hill residents. Although only property owners—responsible for paying assessments—can vote in board elections and charter renewals, five seats are reserved for non-property-owning members.

One seat is designated for a green space advocate who may reside outside the district but has relevant expertise, such as landscape architecture, gardening, or hydrology. The spot is presently occupied by Terri McFarland, a landscape architect based in Dogpatch. Board members serve two-year terms, with a maximum of two consecutive terms.

The GBD is overseeing completion of several large projects this year, including renovation of the “20th Street Flyover” at the intersection of 20th and Minnesota streets. Once an unsanctioned parking lot, the Flyover will feature vegetation and an outdoor “living room” with shaded areas for lounging, neighborhood gatherings, and social events. Designed by Fletcher Studio and supported by a \$150,000 in-kind donation from Quick Crete Productions Corporation, a concrete manufacturer, GBD plans to open the Flyover this month.

Another significant project is the Vermont Greenway, which secured a \$150,000 Community Challenge Grant to rejuvenate the 400 block of Vermont

Street near the Mariposa Street highway exit. The scheme’s centerpiece is the “Eco-Patch,” a 1,000-square-foot garden showcasing native species. The Greenway is part of the broader Potrero Gateway Project, an initiative led by San Francisco Public Works, which aims to revitalize neglected spaces along U.S. 101 between San Bruno, Vermont, 17th, and Mariposa streets, with benches, lighting, and other amenities.

Assuming it’s extended, the GBD will maintain the Greenway after it’s completed. With two volunteer workdays planned for February and March, the space will officially open by April.

“Once we tear down the fences and create that green space, it’s not enough to just create that space, for years to come we have to continue to maintain them,” emphasized Lacy.

The GBD’s original charter will expire this June, after a decade of operation. To continue for another 15 years the district must collect petitions from property owners representing at least 30 percent of assessed property value. If the required petitions are secured, an election will take place in early spring, allowing district property owners to vote on charter extension, with increased sq ft assessment fees of \$0.11396 for residential properties, \$0.0568 for industrial lands, \$0.0284 from green spaces, and \$0.0142 from limited access parcels.

Lacy declined to provide exact numbers on the percentage of petitions the district has received so far.

“The percentage is changing daily, especially since folks are getting back from holiday,” he said. “There is still time to submit petitions...If GBD doesn’t succeed in the renewal then we cannot continue, and our open spaces in Dogpatch and NW Potrero Hill will not be maintained or improved to the standard

that our community has grown accustomed to. We have an agreement with the Department of Public Works that they will provide baseline services in the neighborhood, but we provide services well beyond what the City provides. We also do gardening, maintenance, and trash pickup. Renewing the charter allows us to have stable funding while we continue to apply for other grants to maintain our projects.”

SFPD from front page

that the revised map would intensify confusion about district boundaries, reducing coordinated SFPD response. And they’re frustrated that the proposal hasn’t received widespread community support, which could cause a backlash down the road.

The plan is dead on arrival, said Keith Goldstein, a Bayview Station Community Police Advisory Board member and Potrero Hill Dogpatch Merchant Association president.

“This was due to opposition from community groups and from the officers themselves. Increasing service areas for stations that are radically understaffed is being met with resistance,” said Goldstein.

“We’re simply hoping to keep more of the neighborhood together in a single station district. By moving the boundary a couple of blocks north to 16th and by picking up the little enclave around Mariposa and Utah, the neighborhood would get much more consistent service, despite the challenging staffing levels. The current boundaries create unnecessary confusion, as we’re split among three districts,” said J.R. Eppler, Potrero Boosters president.

“As is, we have been told repeatedly by San Francisco Police Department command staff that we are short on resources and Bayview Station continues to be chronically understaffed. In addition, our Bayview Station officers are pulled too frequently to cover sporting events in Mission Bay, festivals throughout the City and security for high end retailers in Union Square. I would be deeply concerned that we simply do not have the available resources to expand the boundaries of the Bayview Station,” said Earl Shaddix, co-founder and executive director of Economic Development on Third.

SFPD asserts that the proposed changes would balance existing resources with demand for policing. In fiscal year (FY) 2024, SFPD had approximately 2,950 full-time-equivalent (FTE) employees, slightly more than the 2,888 in the previous year, but a considerable decline from the roughly 3,233 FTEs in FY 2020.

Over the last 10 years, the population of the southeastern neighborhoods has substantially increased, with elevated criminal activity directed at commercial businesses. SFPD considered these factors and existing station facilities capabilities in developing its plan. The Department believes that an insufficient number of officers prompts the need for “strategic resource deployment.”

SFPD reevaluates district boundaries at least once every 10 years. The 2024 process began last fall. SFPD performed the analysis internally, working with ARCBridge, a Virginia-based contractor, to help implement specialized geographic information system software.

“ARCBridge has conducted many similar assessments across the country. This company has worked with law enforcement, the national government, and school districts,” said Maria

Cowan, SFPD lead project manager of professional standards and principled policing.

SFPD’s analysis was based on real estate and population changes, as well as call volumes, incident data, and response times between 2019 and 2023. The Department collected comments from more than 50 community survey respondents, two public hearings and multiple focus groups. It developed multiple boundary options, with the goals of minimal changes, community cohesion – keeping residents of distinct communities in one police station district – and prioritizing proximity to significant needs and district stations.

The report detailed challenges SFPD district captains are facing. The Southern District handles intermittent large waves of visitors due to the area’s public event venues and new housing developments. The Bayview District sprawls across a large geographic area, with a concentration of industrial areas and the City’s highest incidence of domestic violence calls. The Mission District has numerous street events, such as Dia de los Muertos and Carnival. It serves multiple neighborhoods, including Outer Mission and Diamond Heights.

Community members called for greater resources in the Mission District and more foot patrols. They asserted that residents located on district boundary lines feel underserved. Portola residents said they had good relations with the Bayview Station.

Keane was pleased that the plan didn’t incorporate earlier proposals to substantially increase Southern District’s workload.

“I participated in a focus group for the 2024 police district border analysis and offered comments at one of the public hearings. My concern then was a proposal to move Mission and Market from Fourth to Van Ness from the Tenderloin District to the Southern District. That would have added a huge call burden to the Southern District,” said Keane.

She said the Southern District has significant crime and drug challenges. The area serves a growing residential population as well as Moscone Center, Oracle Park, Chase Center, and the University of California, San Francisco’s Mission Bay campus.

“The Mission to Market Street corridor between Fifth and Van Ness is among the worst areas in the City. Adding its call burden would have limited Southern’s ability to serve the existing district,” said Keane.

Andrew Robin, a South Beach resident, is concerned about the fall closure of Bayside Market at 120 Brannan Street.

“This market had been open for 35 years but couldn’t continue because of the high rate of theft,” said Robin.

Robin doesn’t want to see the Fourth and King streets Safeway join the Fillmore outlet in closing.

“Then we’d have a food desert in the middle of the City. After reviewing the proposed maps, I’d like to see the Southern Station take care of what it has before being handed a big chunk of Market Street. I walk around South Beach a lot and feel safe. I want to keep it that way,” said Robin.

Edward Hatter, Potrero Hill Neighborhood House executive director, said he’s worried about how the stations will be staffed. And he’s unclear why Potrero Hill wouldn’t be served by the Southern Station, which houses SFPD’s Public

SFPD continues on next page



CITY AND COUNTY OF SAN FRANCISCO

Community Outreach Public Notice

Prepared by The Office of the Clerk of the Board of Supervisors
Pursuant to Administrative Code, Section 2.81

Ethics Commission

The San Francisco Ethics Commission is the city agency responsible for enforcing conflict-of-interest, campaign finance, and lobbying laws in San Francisco. We are committed to making San Francisco city government accountable and transparent. Ethics laws ensure that public officials make decisions in the interest of all San Franciscans and that no one can use a public position for their own personal benefit.

Be informed! You can learn about San Francisco's ethics rules by visiting our website at sfethics.org. There, you can also review public disclosures filed by City officials, political campaigns, and lobbyists. This information can help you understand who is spending money to influence city government and local elections.

See something? Say something! If you have information about a violation of conflict-of-interest, campaign finance, or lobbying laws, you can file an online complaint with the Ethics Commission by visiting our website.

San Francisco Ethics Commission
Accountability – Transparency – Trust
sfethics.org

Office of Civic Engagement & Immigrant Affairs

Resources for Immigrants in San Francisco

The SF Immigrant Forum is an online resource for immigrants of all backgrounds and statuses in San Francisco. This site includes resources for free to low-cost immigration legal help, healthcare and public benefits information, know your rights, upcoming events, and much more!

Get connected to the trusted resources you need: sf.gov/immigrants

Department of Technology

The San Francisco Department of Technology provides innovative, reliable, and secure technology solutions, empowering City and County agencies to deliver exceptional, community-focused services. To support San Franciscans in staying safe online, we've published cybersecurity resources in multiple languages on our website: <https://www.sf.gov/resource/2023/cybersecurity-tips>. These resources cover essential topics like:

- Recognizing and avoiding phishing scams.
- Protecting your personal information online.
- Tips for safe online transactions.

Cyber threats are on the rise, but together, we can build a more secure community. We encourage you to explore these resources and share them with your friends and family. Let's work together to protect ourselves and our city. Visit our website today to learn more and stay safe! Thank you for helping us promote cybersecurity across San Francisco.

Mayor's Office for Victims' Rights (MOVR)

Phone: 628.652.1175
Email: info.ovwr@sf.gov

The Mayor's Office for Victims' Rights provides confidential consults on crime victims' legal rights, warm referrals to support services, direct advocacy on behalf of survivors, and legislative/policy solutions to strengthen victim services and violence prevention.

Rent Board

IMPORTANT NOTICE FOR LANDLORDS

San Francisco landlords need a license before imposing annual and banked rent increases on tenants according to the City's rent control laws. To obtain or renew a license, property owners are required to report certain information about their residential units into the San Francisco Housing Inventory each year. Property owners can submit their Housing Inventory information to the Rent Board in a few ways, but are strongly encouraged to complete the process online at portal.sfrb.org. Once the system accepts the submission, a rent increase license will be automatically generated and readily available. Owners can also deliver a paper Housing Inventory form to 25 Van Ness Ave., Suite 320, San Francisco, CA 94102 or to rentboard.inventory@sfgov.org. Assistance is available by calling 311 or emailing rentboard.inventory@sfgov.org. Visit sf.gov/rentboard for more information.

The City and County of San Francisco encourages public outreach. Articles are translated into several languages to provide better public access. The newspaper makes every effort to translate the articles of general interest correctly. No liability is assumed by the City and County of San Francisco or the newspapers for errors and omissions.

SF.GOV



CNSB#3889280



The Portfolio

YOUTH CREATIVE CONTEST at THE VIEW

CREATIVE YOUTHS! The View invites those under 18 to submit any creative work suitable for publication, including drawings, short stories (fewer than 150 words), photographs, comic strips, jokes, before the 20th of each month. Winning entries will receive a \$20 prize. Please send submissions to editor@potreroview.net.

Seven-year old King Street resident, **Muhammad Al-Haq "Mohak" Elmarouk**, used markers to draw "The Love Robot." He's a second grader at Fitness for the Brain.



Arkansas Street resident, **Kai**, six, is a student at Daniel Webster Elementary School.



Rhode Island Street resident, **Austin Reddy**, eight, drew "Dakota (our dog) on top of Potrero Hill barking at a squirrel." He attends Live Oak School.

SFPD from previous page

Safety Building and Police Headquarters and administrative offices.

"It's bizarre that this is back up for consideration and it is still not serving Potrero Hill," said Hatter. "In 2024, response time was not an issue for us at the Neighborhood House. I remember making a call regarding some individuals who showed up and were unwelcome. SFPD came within 15 minutes. What was a concern was the first thing that SFPD asked: "What color were the suspects?" That can change."

"My takeaway was that [the proposed map is] pretty similar to the past boundaries. The question businesses in our area have is: when SFPD has limited resources, how does it prioritize and support businesses that are essential to the economic health of the City?" said Marisa Rodriguez, Chief Executive

Officer of the Union Square Alliance.

Union Square Alliance members offer more than 12,000 hotel rooms, as well as retail, theaters and museums, attracting "...visitors and residents. They are vitally important for the City's economy," said Rodriguez. "Union Square feels very supported by SFPD. But as we have stated in the past, we need more police officers. A higher deployment will make the area safer and encourage small businesses to open shops here."

"The Commission and the SFPD will work together to plan and execute implementation of the new district station boundaries no later than July 2026," said Cownan.

The Commission will accept comments on the proposal until at least the end of April, after which it'll adopt new boundaries.

MAKE YOUR TAX-DEDUCTIBLE DONATION to Potrero View

through SF Community Power; consider including your favorite newspaper in your trust.

Correspondence to:
296 Liberty Street, San Francisco 94114

ON SALE

...at The Good Life Grocery



Lovely Flowers On Sale
For Your Valentine



Clover
Whipped Cream
6.5 oz -reg 3.59
on sale 2/15-2/28
\$2.99



Tate's
Cookies
7 oz. -reg 7.99
\$ 5.49

La Fermiere
French Style
Yogurt
4.9 oz. -reg 3.49
2 for \$6



Clover
Organic Milk
64 oz. -reg 6.59
on sale 2/1-2/14
\$5.99



Barbara's
Cheese
Puffs
5.5 oz. -reg 4.59
2/\$5



Chocolove
Chocolate Bars
3.1 oz -reg 5.49
2 for \$7



Rao's
Pasta Sauces
24 oz. -reg 11.99
\$8.49



Tillamook
Shredded
Cheese
8 oz. -reg 5.79
\$4.49



St. Pierre
Brioche Buns
4 ct -reg 4.49
2 for \$7



Stumptown
Cold Brew
Coffee
10-11 oz. -reg 5.29
\$3.99

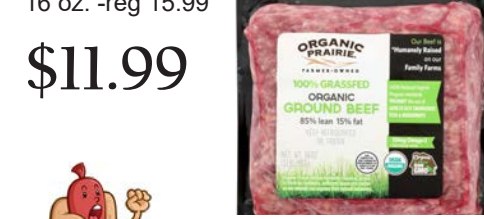


Garden of Eatin'
Party Size
Chips
16 oz. -reg 7.99
\$4.49

Organic Prairie
Grass-fed
Ground Beef
16 oz. -reg 15.99
\$11.99



Sanzo
Sparkling Water
3-12 oz. -reg 12.29
\$9.99



Aidell's
Smoked Sausages
12 oz. -reg 7.99
\$6.49



February 9th



Good Life Grocery
Fresh Salsa &
Guacamole
Made In House Daily



Party wings!
49er Brand Hot Dogs!



Sale Prices effective February 3-28, 2025



GTS Synergy
Kombucha
16 oz. -reg 4.99
2 for \$7



The
GOOD LIFE GROCERY

